

# 2018 Check-in



# Opportunities to get active

| 18<sup>th</sup> July, 2018

## Moderator



**Annette Pensel**

Executive Director

## Presenters



**Caroline Glowka**

Program Manager



**George Watene**

Program Manager



**Josh Edwards**

Communications Manager



# AGENDA

1. **2018 so far:** Where are we at?
2. **Outlook** for the second half
3. Recap on **opportunities** for GCP Members

## 1. Use the Q&A box



To **place your questions**  
at any time

## 2. Your mic is silenced



To avoid undesired  
**background noises.**

## 3. Remember



**This session** is being recorded  
for archive purposes



What can be achieved  
**when 150+ members work together**  
for the sustainability of the coffee sector?

**find out in the > Annual Report 2017**

<https://annualreport2017.globalcoffeeplatform.org>



# 2018 SO FAR: WHERE ARE WE AT?



# Enabling the coffee sector towards sustainability

**4. Programs and Funding**  
International  
National

**1. Country Sustainability Platforms:**  
creating sustainable regions

**2. Collective Action Networks on Key Issues**

Climate Smart Agricul.  
Economic Viability  
of Farming  
Gender & Youth

Our partner SCC leads 4 complementarily



Brazil



Colombia



Peru



Honduras



Vietnam



Tanzania



Uganda



Indonesia



Kenya

**3. Tools:**  
Sustainability  
Framework,  
Indicators,  
Baseline Code,  
Reporting

**National Sustainability Curricula**



GLOBAL COFFEE  
PLATFORM  
for a sustainable coffee world



**Convene**



**Enable  
local action**



**Facilitate Impact  
Measurement**



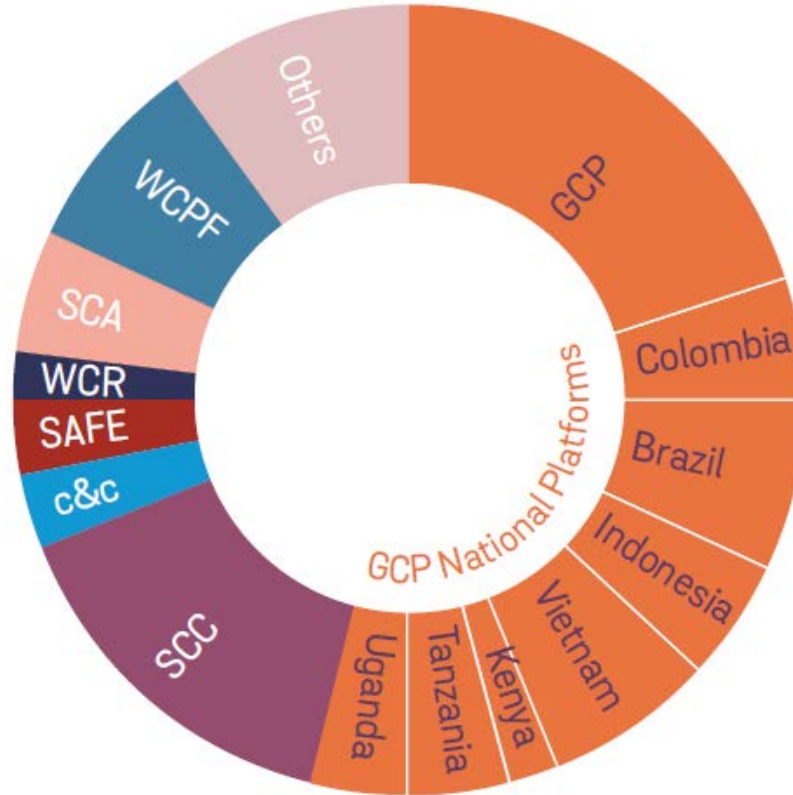
GLOBAL COFFEE  
PLATFORM  
for a sustainable coffee world



**Convene**

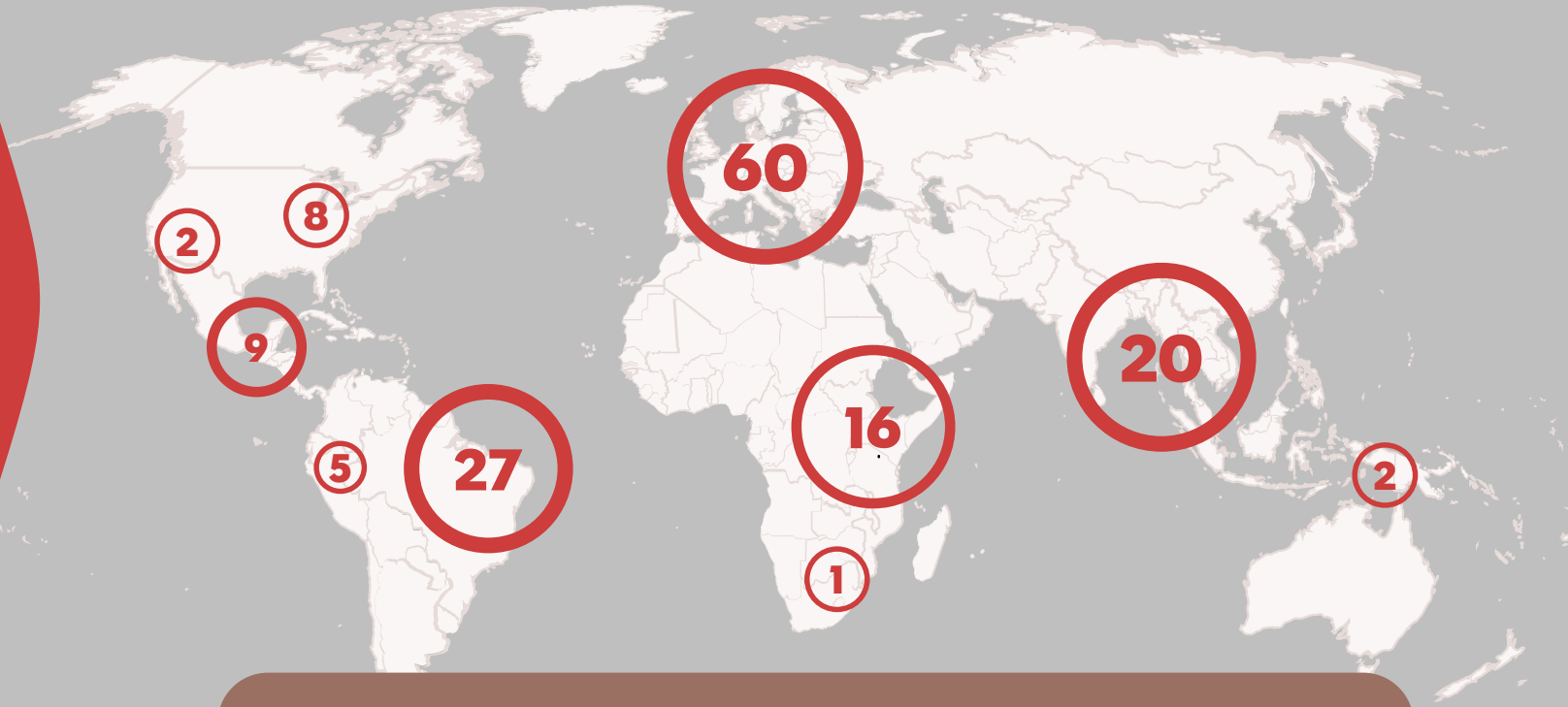


# WHY ALIGNMENT IS CRUCIAL



Source: Coffee Barometer 2018

# AN EXPANSIVE NETWORK



**Producers | Trade | Industry | Associations | Civil Society**

# A DIVERSE NETWORK



GLOBAL COFFEE  
PLATFORM  
for a sustainable coffee world



# NEW GCP MEMBERS



EFICO  
GREEN COFFEE

*Mother*  
**PARKERS**  
TEA & COFFEE



**TESCO**



GLOBAL COFFEE  
PLATFORM  
for a sustainable coffee world

SUPRACAFÉ®

**Hivos**  
people unlimited

**CAS**  
COFFEE ASSURANCE SERVICES

Benckiser  
Stiftung Zukunft



 **METAD**  
*Sustainability at its Best™*



# COOPERATION PARTNERS



\* Discussion or formalization in progress



**Enable  
local action**

# Together, We are tackling some challenges in the Coffee Sector



Climate Change



Generational  
Takeover



Low Productivity



Low Profitability  
at farmer level



Gender inequality



Labour Issues



Deforestation



Need for: Coffee  
Research & Extension  
Services

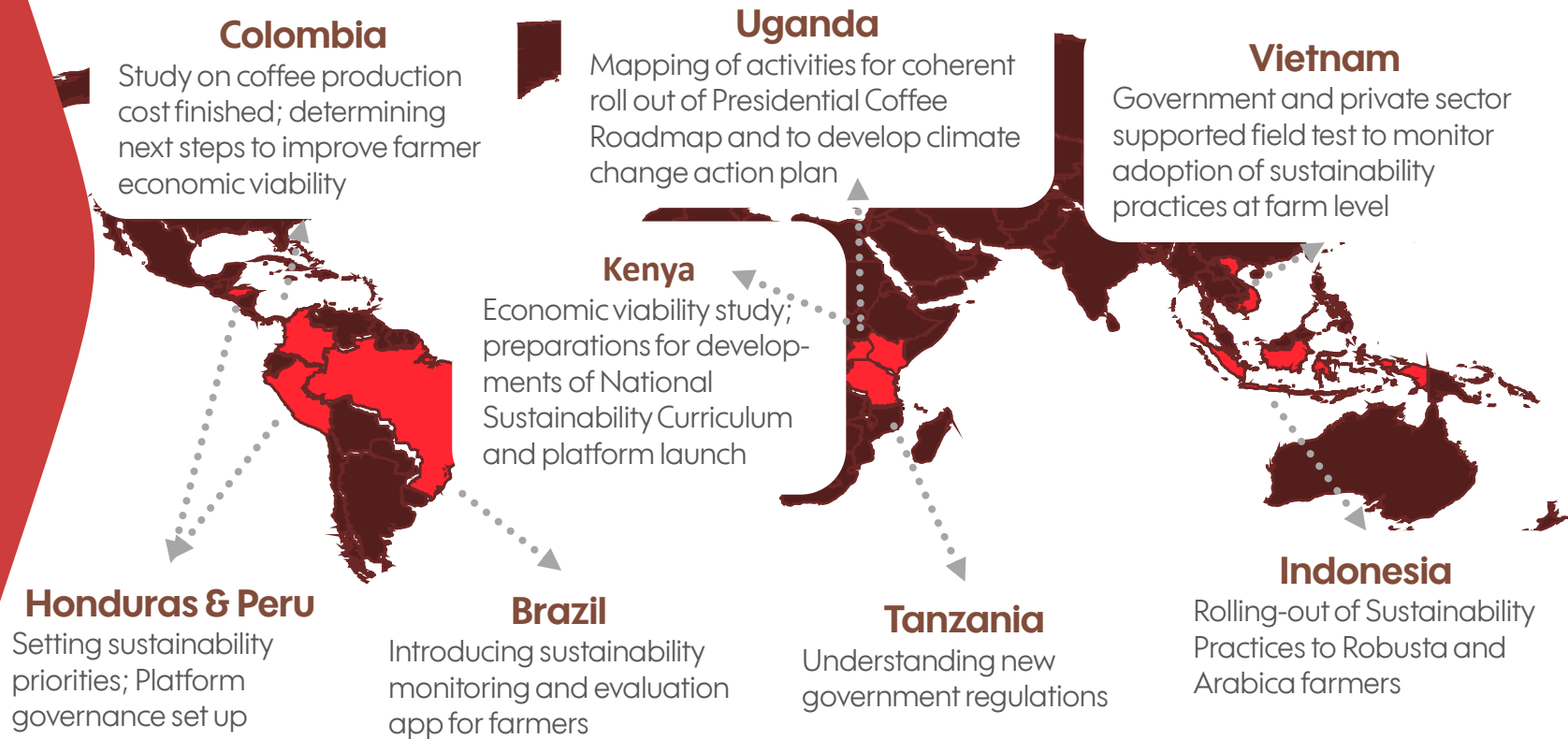


Access to finance

# Local stakeholders, local priorities, local solutions



GLOBAL COFFEE  
PLATFORM  
for a sustainable coffee world



# COLLECTIVE ACTION NETWORKS



## Climate Smart Agriculture

- Learning Series with Alliance for Resilient Coffee: Understand, Design, Act
- Engagement opportunities in Honduras and Uganda
- Climate Catalogue in development



## Economic Viability of Coffee Farming

- Economic Viability of Coffee Farming study published
- AFCA panel for learnings
- Supporting local action in Colombia, Kenya and Uganda



## Gender & Youth

- Gender Equity Guide and Common Measurement Framework launched
- Join Partnership for Gender Equity Hub to advance your gender strategy and exchange
- ICO/GCP hosted webinar, October 1st



GLOBAL COFFEE  
PLATFORM  
for a sustainable coffee world

**Complementary Collective Action Networks led by Sustainable Coffee Challenge:**

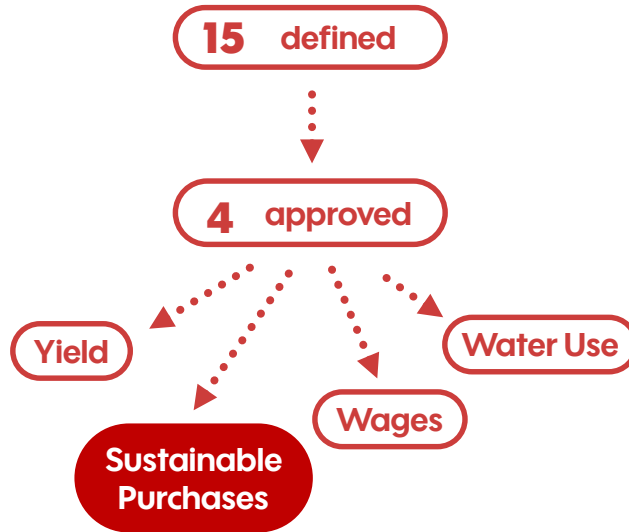
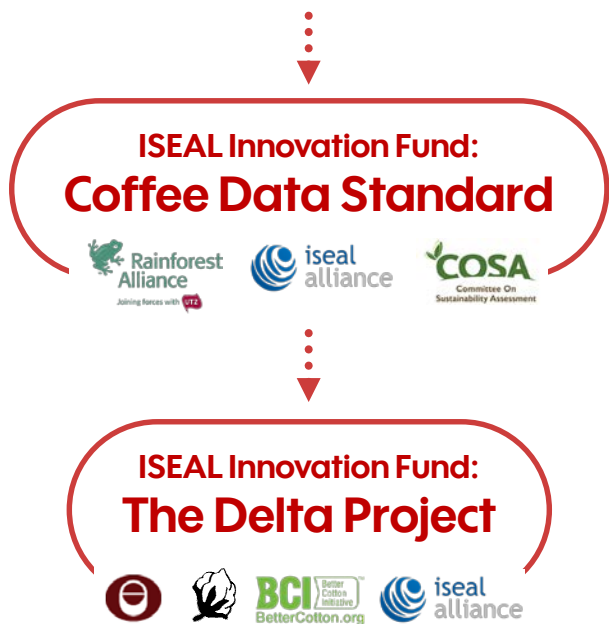
1. Scaling Up Sustainable Coffee Sourcing, 2. Coffee Farm Renovation & Rehabilitation  
3. Improved Labor Practices and Supply, 4. Mapping + Monitoring of Coffee and Forests



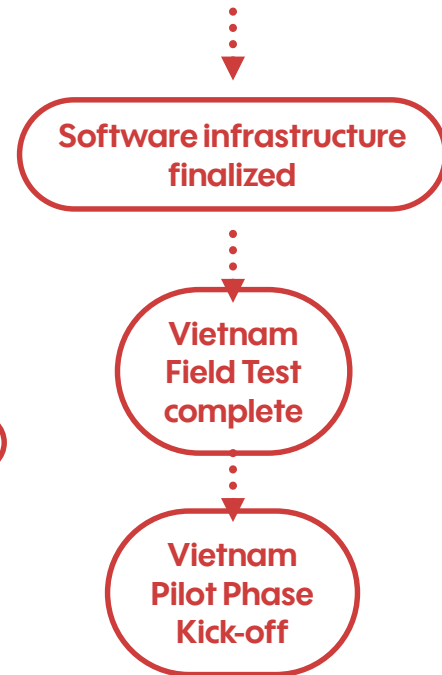
# **Facilitate Impact Measurement**

# Sustainability Progress Framework by SCC & GCP

## COMMON INDICATORS



## REPORTING



# OUTLOOK FOR THE SECOND HALF 2018?





**Convene**

# SAVE THE DATE!

THE MOST IMPORTANT  
COFFEE SUSTAINABILITY  
EVENT OF THE YEAR

8<sup>th</sup> – 10<sup>th</sup>  
NOVEMBER  
2018



GLOBAL COFFEE  
SUSTAINABILITY  
CONFERENCE 2018

BELO  
HORIZONTE  
BRAZIL

A clear  
sector  
agenda

Opportunities  
for  
local action

Latest  
trends  
and best  
practices

Dedicated  
networking

Progress  
towards  
sustainability



# Climate Smart Agriculture Online Learning Series [Register Now](#)

1	June 7 <sup>th</sup>	Understanding climate change	Introduction
2	June 12 <sup>th</sup>	How is climate change affecting my supply chain?	Risk Profiles
3	June 28 <sup>th</sup>	How can I manage the effects climate change is having on my supply chain?	Tools
4	July 19 <sup>th</sup>	How can I scale up CSA?	Scale
5	September 27 <sup>th</sup>	How do I know my investment in CSA is working?	Monitoring
6	October 25 <sup>th</sup>	How can I convince my company and others to invest in CSA?	Business Case
7	November 8 <sup>th</sup> December 6 <sup>th</sup>	How can collaboration work? Bringing action to origin!	Collaboration



**Enable  
local action**



# CSA Learning Series: Opportunities in Honduras and Uganda

## Honduras



## Platform Agenda

Contribute to National  
Coffee Platform's  
agenda

Multi-stakeholder  
collaboration

Learnings & results  
will be shared  
with the sector

Progress will be  
measured

## Uganda



## Climate Change Working Group

# Participate in Country Platforms



## Colombia

Engage with the Sustainable Trade Platform on action to improve economic viability of coffee farming

## Uganda

Participate in Platform meetings to steer development; Join working groups: 1) Climate Change, 2) Economic Viability

## Vietnam

Learn about pilot results for monitoring (Sep.); Scale learnings on water management in your supply chain; Contact GCP Vietnam to access VnSat co-funding

## Kenya

Join platform launch of Kenya Platform 31st July; Share your recommendations to the NSC

## Honduras & Peru

Join the platforms and engage on setting priorities; HO: join climate change workshop

## Brazil

Measure Coffee Sustainability Curriculum adoption via app; Join member initiatives!

## Tanzania

Engage to re-establish public/private dialogue

## Indonesia

Join SCOPI as member and task forces; Support roll out of the National Sustainability Curricula

# Member Initiatives

- \* Improve your sustainability investments on key issues through collaboration
- \* GCP role: transform your ideas into concrete action

# Responsible Use of Agrochemicals – Brazil

## Objective

Improve all Coffee Sustainability Curriculum (CSC) practices related to agrochemical issues at farm level

## Activities

Trainings and capacity-building activities

Measuring adoption of practices via CSC App

Funding for scaling

## Result

50% of coffee aligned with CSC after 5 years

## Member Initiative Participants



ECOM



Olam



**SINDIVEG**  
SINDICATO NACIONAL DA INDÚSTRIA  
DE PRODUTOS PARA DEFESA VEGETAL

Advanced conversations and potential partners  
under evaluation

# This is your chance to



Join the initiative  
right now!



Use  
developed materials



Apply lessons  
learned

**Contact**



**Pedro Ronca**  
[ronca@globalcoffeeplatform.org](mailto:ronca@globalcoffeeplatform.org)

# Weed Management Initiative – Brazil

## Objective

Avoiding soil erosion and derivate problems in coffee fields

## Activities

Farmer Trainings

Coffee Field Days

Technical guidance document

Media Outreach

## Result

**500 growers**

through the Digital Coffee Farmer Program

**1,500 growers**

through Field Days (approx.)

## Member Initiative Participants



ECOM



**CETCAF**  
Centro de Desenvolvimento Tecnológico do Café



# This is your chance to



**Join the initiative  
in 2019!**



**Use  
developed materials**



**Apply lessons  
learned**

**Contact**



**Pedro Ronca**  
**[ronca@globalcoffeeplatform.org](mailto:ronca@globalcoffeeplatform.org)**

# Vietnam: More Coffee with Less Water

## Objective

Ensure equitable and sufficient water availability in the Central Highlands of Vietnam

## Activities

Training on irrigation management

Water saving and monitoring

Advocacy on water policies with VCCB

200 trainers trained in 5 provinces

80.000 farmers trained

## Result

150.000 training contacts reached

Water policies improved

## Member Initiative Participants



Swiss Agency for  
Development and  
Cooperation (SDC)



Hanns R. Neumann Stiftung



the sustainable  
trade initiative



# This is your chance to



**Participate in  
workshops**



**Use developed  
materials**



**Benefit from future  
improved water policies**

**Contact**



**Tran Quynh Chi**  
[chitran@globalcoffeeplatform.org](mailto:chitran@globalcoffeeplatform.org)

# More Member Initiatives in development...



**What?**

Early stages of an innovative systemic transformation process

**Where?**

Arabica region in Minas Gerais - Brazil

**Who?**

Open for other GCP Members and interested parties

## Contact



**Rogier Eijkens**

[eijkens@globalcoffeeplatform.org](mailto:eijkens@globalcoffeeplatform.org)



# Facilitate Impact Measurement

# Sustainability Progress Framework: opportunities

## Common Indicators

### Coffee Data Standard Project:

Step 1: Indicator alignment

Step 2: Technical, data points -> data standard

- Register for project & share your indicators now!
- Participate in webinar on results
- Participate in testing the data standard and indicators

## NSC Measurement & Reporting

Learn about  
results from  
Vietnam Pilot in  
Sept 2018

Brazil: Learn  
about results  
from using CSC  
App in Nov 2018

### The Delta Project:

Broader consultation on indicator framework for  
Coffee & Cotton - starting 2019





# RECAP: OPPORTUNITIES FOR GCP MEMBERS

# If you are not already involved...

**CSA**  
**Engagement**  
**Honduras**  
**& Uganda**

[Register Now](#)



**Caroline Glowka**  
GCP Program Manager

glowka@globalcoffeeplatform.org

**Coffee**  
**Data**  
**Project**

[Register Now](#)



**Lars Kahnert**  
GCP Program Manager

kahnert@globalcoffeeplatform.org

**Member**  
**Initiatives**  
**Brazil**



**Pedro Ronca**  
GCP Brazil Manager

ronca@globalcoffeeplatform.org

or



**Member**  
**Initiatives**  
**Tchibo**



**Rogier Eijkins**  
GCP Director of Programs

eijkins@globalcoffeeplatform.org

or



**Member**  
**Initiatives**  
**Vietnam**



**Tran Quynh Chi**  
GCP Vietnam Manager

chitran@globalcoffeeplatform.org

# Contact us!

## GCP Secretariat

Adenauerallee 108

53113 Bonn, Germany

**PHONE:** +49 (0) 228 850 50 0

**FAX:** +49 (0) 228 850 50 20

**EMAIL:** [info@globalcoffeeplatform.org](mailto:info@globalcoffeeplatform.org)

## Country Coordination Brazil

Praça Rio Branco, 13

Caixa Postal 83 13990-000

Espírito Santo do Pinhal

SP – Brasil

**PHONE:** +55 (19) 3651 3233

**EMAIL:** [ronca@globalcoffeeplatform.org](mailto:ronca@globalcoffeeplatform.org)

## Coordination Latin America

in collaboration with Solidaridad Colombia  
San Salvador, El Salvador

**PHONE:** +503 77 87 0630

**EMAIL:** [beloso@globalcoffeeplatform.org](mailto:beloso@globalcoffeeplatform.org)

## Country Coordination Vietnam

c/o IDH office Vietnam

116 Thuy Khue,

Hanoi, Vietnam

**MOBILE:** +84 (0) 913547712

**EMAIL:** [chitran@globalcoffeeplatform.org](mailto:chitran@globalcoffeeplatform.org)

## Country Coordination Indonesia

In collaboration with SCOPI Secretariat Office  
MD Place Tower 2, 3rd floor, Unit A

Jl. Setiabudi Selatan No.7, Jakarta 12910

**PHONE:** +62 21 2966 9250

**EMAIL:** [info@scopi.or.id](mailto:info@scopi.or.id)

## Country Coordination Uganda

3rd floor, Bakwanye House

Plot 26 Wampewo Avenue

PO Box 31668

Kampala, Uganda

**PHONE:** +256 393 266 154 **MOBLIE:** +256 784 300 230

**EMAIL:** [se@cafeafrika.org](mailto:se@cafeafrika.org)

# LOCAL ACTION, GLOBAL CHANGE.

TOWARDS A VIABLE  
COFFEE SECTOR.

8<sup>th</sup> – 10<sup>th</sup>  
NOVEMBER  
2018

BELO  
HORIZONTE  
BRAZIL



GLOBAL COFFEE  
SUSTAINABILITY  
CONFERENCE 2018

# Thank you!

## We will share with you

- This presentation & answers
- The webinar's recording
- Links to get involved