



REVISED BY-LAWS FOR MEMBERSHIP ASSEMBLY AND BOARD



WHY ARE THE CHANGES NECESSARY?

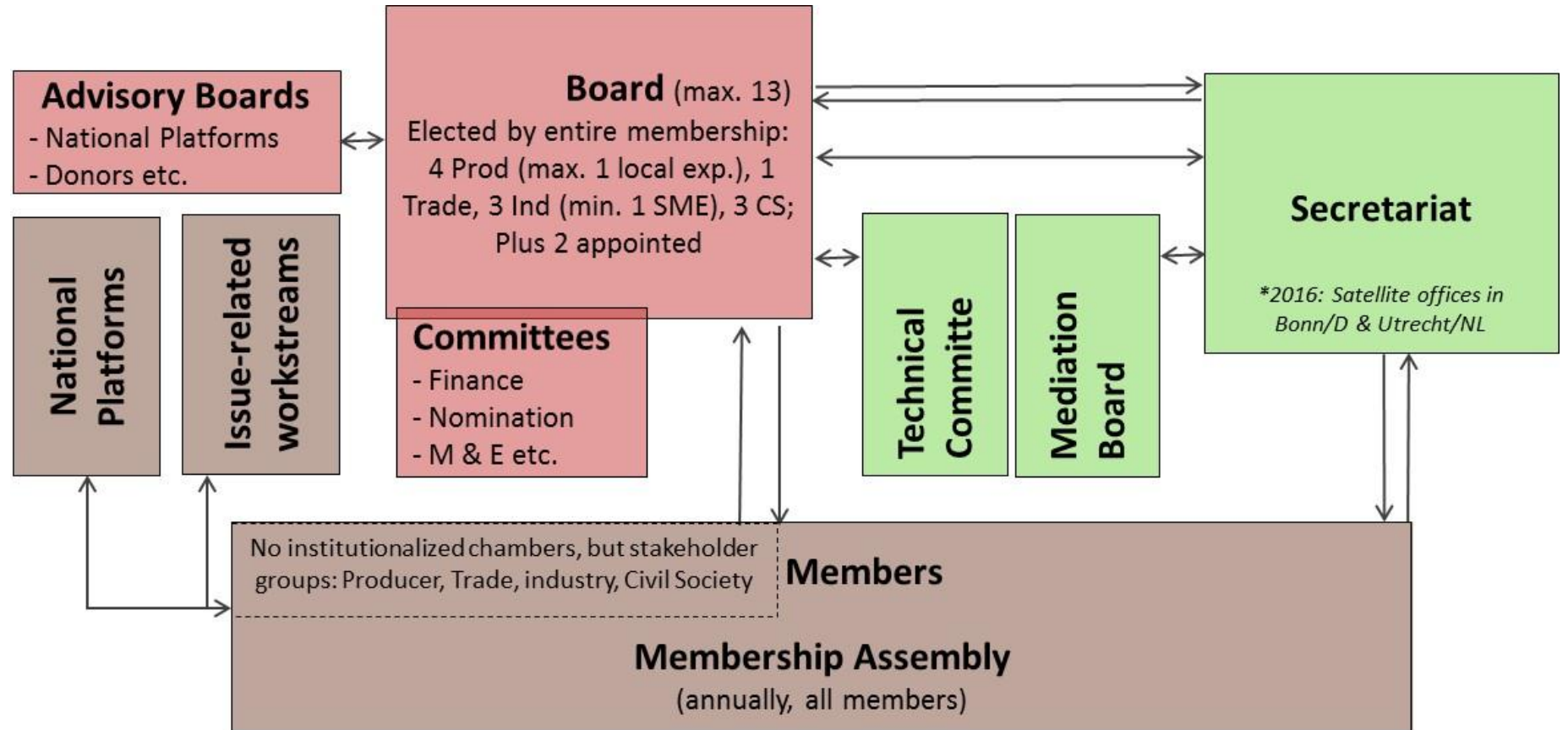
- Effectively support sector transformation
- Reflect aim of collective impact
- Facilitate the collaborative, inclusive and multi-stakeholder character at global and national levels



KEY CHANGES

- An effective governance to facilitate and enable broad engagement and a global agenda
- Reduced fragmentation, increased engagement
- Increased support structures by the Board, Advisory Boards, and Secretariat
- Representative, inclusive and transparent procedures
 - From an institutionalized tri-partite chamber structure to stakeholder groups
 - From a General Assembly to an annual Membership Assembly
 - From a Council to a Board

NEW GOVERNANCE STRUCTURE





IMPORTANT ADDITIONAL RECOMMENDATIONS FROM COUNCIL

- As a Swiss registered non-profit association, at least 2 Swiss residents on the governance (By-laws Membership Assembly 5.6.4., By-Laws Board 2.5.)
- In order to enable the best candidates to be elected by the membership, the Council wants to recommend to the General Assembly to change these two paragraphs in the By-Laws as follows:
 - “Consequently, if none of the 11 elected and 2 appointed Board members are Swiss residents, the Board may appoint 2 additional Swiss resident Board members for administrative reasons”
 - “If necessary, the By-Laws can be adjusted accordingly, following an additional legal check, eventually increasing the total number of Board members to 15”



**GLOBAL COFFEE
PLATFORM**
for a sustainable coffee world

ROUND OF QUESTIONS

SOMETHING IS NOT CLEAR?

6



VOTING TIME

The General Assembly is requested to:

Vote on the proposed new governance structure, by formally adopting the proposed new By-Laws for the Membership Assembly and the Board of the Global Coffee Platform